

Just Servers Ltd
Farnborough
Hants
GU14 8SA
www.just-servers.co.uk
sales@just-servers.co.uk
Tel 01252 376565
Fax 08714 336648

Detailed specifications for the range of “Tasmin” servers.

Requirement:- A reliable, secure, small business server.

To enable your business to compete in these competitive times you need a network that provides secure controlled internet access, and E-Mail that is free from Virus's and Spam.

The Tasmin range of servers provide a multi function solution that satisfies a diverse range of customers requirements.

Typical customers have the following requirements:-

- Little or no on-site IT expertise required.
- Very high data security, with automatic reliable backup.
- Up to 5 years between reboots providing very high availability.
- Provide secure controlled internet access.
- Need to store, share and backup all data.
- An e-mail solution to support industry standard POP3/SMTP email clients (Outlook, Outlook express, Netscape ETC)
- Full protection from Virus's, Spam and other unwanted material.
- Administration can be done remotely using secure tools saving engineer traveling time and money.
- Extra users can be added at any time without buying extra client licenses.

There are 4 models in the “Tasmin” range of servers:-

The difference is the hard drive configurations:-

Tasmin-10 uses Hardware Raid 1 for maximum data security.

Tasmin-20 uses Hardware Raid 0 for maximum disk performance.

Tasmin-30 uses Hardware Raid 0 + 1 giving the advantages of both of the above.

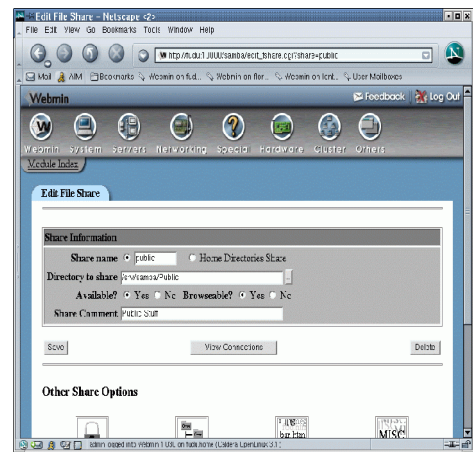
Tasmin-40 uses SCSI raid 5 and is configured to suit the exact customer requirements.



Outline description:-

This is a very flexible, hardened, stateful firewall/email/data storage server with the following features:-

- Suitable for up to 300 users or 25,000 e-mails per day, depending upon hard disk sub-system.
- Very high availability (in many cases up to 5 years between reboots).
- No client licenses to purchase, the number of supported clients is only limited by the hardware on which it is run.
- Anti-Spam system installed and configured, that normally stops over 99.5% of Spam.
- Anti-virus system installed, with two Anti-Virus toolkits, which are update every hour.
- A hardened stateful (IPTABLES), stable and highly configurable firewall.
- A DHCP client that allows the system to (optionally) obtain its IP address from your ISP.
- A DHCP server that can help configure machines on your internal network.
- A caching DNS proxy server, to help speed up Domain Name queries.
- A web caching proxy server, to speed up and control web access, and block all direct access to the Internet.
- NAT (network address translation) system to hide your internal TCP/IP address from the internet.
- Printer sharing and flexible data storage, allowing secure/private areas to be setup as required.
- Fax sharing system, to allow users to send faxes from their workstations, also receive faxes and have these sent by e-mail to a member of staff, for sending on to the required recipient this can be single or multiple fax lines.
- Remote and internal POP3 and SMTP email services installed and configured, with SMTP authentication.
- Can be setup to allow workers in remote offices to send and receive e-mails as if they were in the office.
- Setup with a remote graphical administration system.
- Setup to allow secure remote administration and remote updates.
- Over 99.9% of software updates can be achieved without rebooting the server or interrupting user access.
- An intrusion detection system to detect changes to the system.
- 512mb High speed Ram.
- Powerful 2.0Ghz CPU.
- Supplied with an external ADSL modem/router.
- 400watt Server Mini tower case, with locking castors.
- Built in 20gb SCSI DAT tape backup drive.
- Hardware RAID 1 with dual 120gb 7200rpm 8mb cache high speed hard drives, for high data security and reliability.
- Built in PCI 10/100 network card to provide secure internet access.
- Built in PCI 10/100/1000 network card to give your workstations full speed access to the server.
- CD Re-writer to allow backups to re-writable media (this can be automated to suit the customers requirements).
- Supplied installed and configured on new hardware which is covered by a 12 month return to base warranty (can be upgraded to on-site if required).

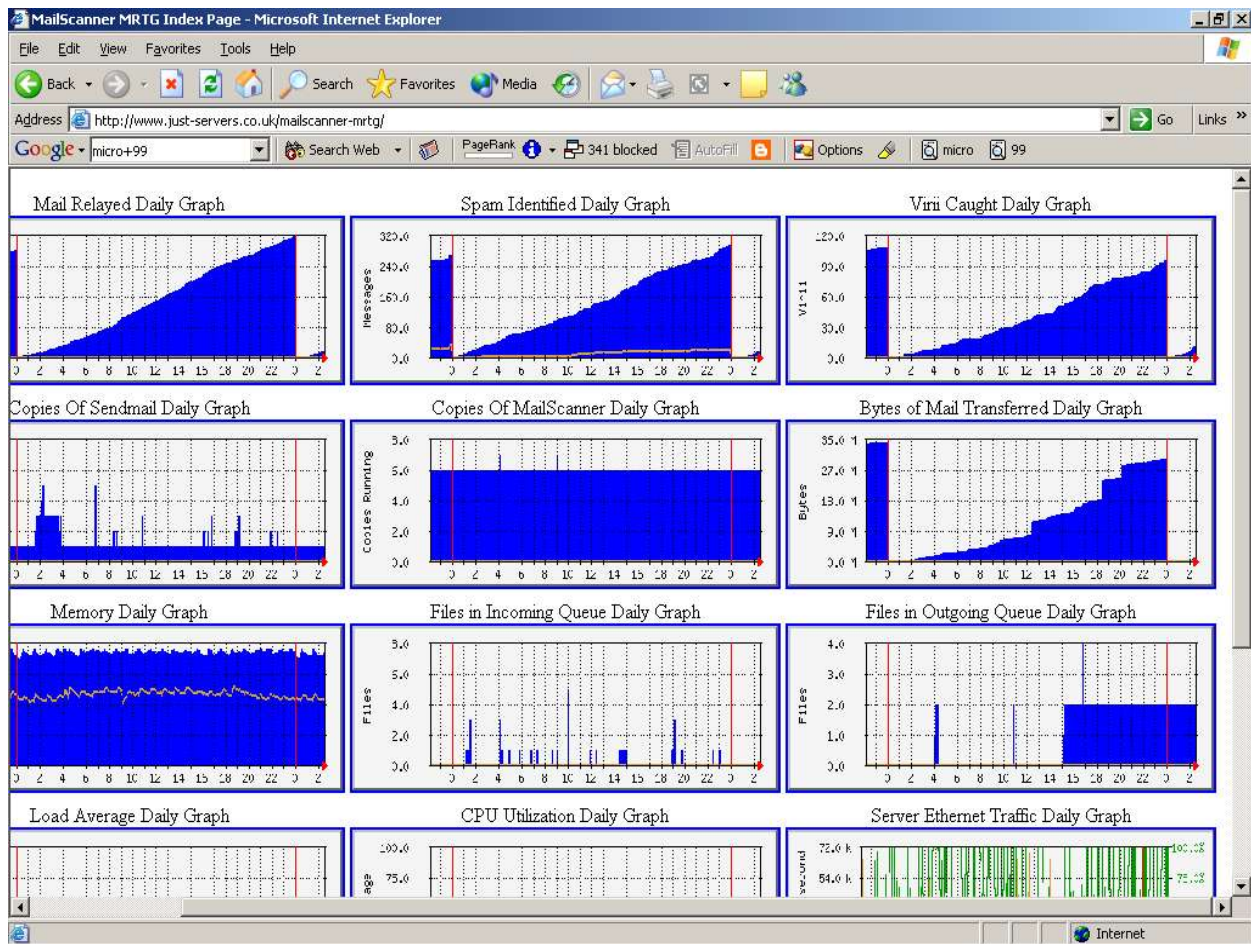


Anti-Virus system detailed features:-

- Supplied with 2 different anti-virus toolkits for extra security.
- Uses any of 14 different file-based virus scanners, allowing hourly updates for the latest viruses
— *Sophos, McAfee, F-Prot, Command, Kaspersky, Inoculate, Inoculan, Nod32, F-Secure, Panda, RAV, Antivir, ClamAV, Vscan*
- Checks and traps for all known Outlook, Outlook Express, Internet Explorer and Eudora security vulnerabilities.
- Partial messages, and messages with an "external body", are detected and trapped.
- Simple to use and yet extremely flexible configuration system makes it easy to setup for systems running 1 or 10,000 domains
- Scales up to millions of messages per day, taking full advantage of all available CPUs, memory and network resources.
- Scans for viruses inside all attachments, including compressed archives.
- Checks inside Microsoft Outlook Rich Text format attachments (MS-TNEF files).
- Automatically disinfects any viruses that can be disinfecting from the original message attachment (e.g. Word macro viruses).
- Attachments can be accepted or rejected on the basis of any set of arbitrarily complex filename patterns.
- Infected attachments are replaced with a customisable message to the recipient explaining what has happened to their attachment, and who they should contact for assistance.
- Even if some attachments to a message are infected, clean attachments will still be forwarded intact.
- System administration staff are notified every time a virus is found or an attachment is rejected.
- Senders of infected messages can be notified so they can check their systems for viruses.
- Designed to handle "Denial Of Service" attacks caused by illegal Microsoft Outlook attachments and files such as the "Zip of Death" which cannot be expanded or scanned completely.

Anti-Spam system detailed features:-

- Every email is checked against a number of internet databases to see if this is an email that is known Spam.
- The Bayesian database support in the Anti-Spam system tries to identify Spam by looking at what are called *tokens*; short phrases that are commonly found in Spam or ham. (Ham is e-mail that is not Spam) Each token is given a small score, together these scores rate the email as Spam if above administrator defined levels.
- Spam scores can be set to different actions at different levels, these are normally delete at above a score of 10 and send to a special email account above 5.
- The system also checks that the domain name exists and checks that the domain is not a domain known as being used for sending Spam.
- Each system has been pre-trained by over 30 thousand emails during the installation process.
- E-mail addresses and/or domains can be added to a whitelist to ensure these e-mails are not blocked.
- E-mail addresses and/or domains can be added to a blacklist to ensure ALL e-mails from that address and/or domain are blocked.



Optional extras:-

- Graphical reporting system as per above sample (updated every 5 minutes).
- Hardware Raid 0 to further increase the hard disk performance (uses a second 7200rpm 8mb cache high speed hard drive to allow reading and writing to and from both drives at the same time).
- Hardware Raid 0 and 1 to provide both the above benefits.
- Hardware SCSI Raid 5 solution (disk size to suit customers requirements).
- 20/40Gb SCSI DAT drive for backups (set-up to backup the user data every night at 23:00).
- 36/72Gb SCSI DLT drive for backups (set-up to backup the user data every night at 23:00).
- 100/200Gb SCSI drive for backups (set-up to backup the user data every night at 23:00).
- UPS to protect the system during power cuts and other power problems.
- Increase the memory to 1gb, 2gb or 4gb.
- Increase the CPU speed to 2.6GHz, 3GHz.or 3.2GHz.
- Dual CPU capable systems (Dual capable system are available to special order).
- Can be part of a VPN solution.
- DNS server software can be added.
- Web hosting software can be added to allow internal and or external web sites to be hosted.